

DRISCOLL BUILDING APARTMENTS
Sherwood - **936 sq. ft.**
1 Bedroom / 1.5 Baths / Den

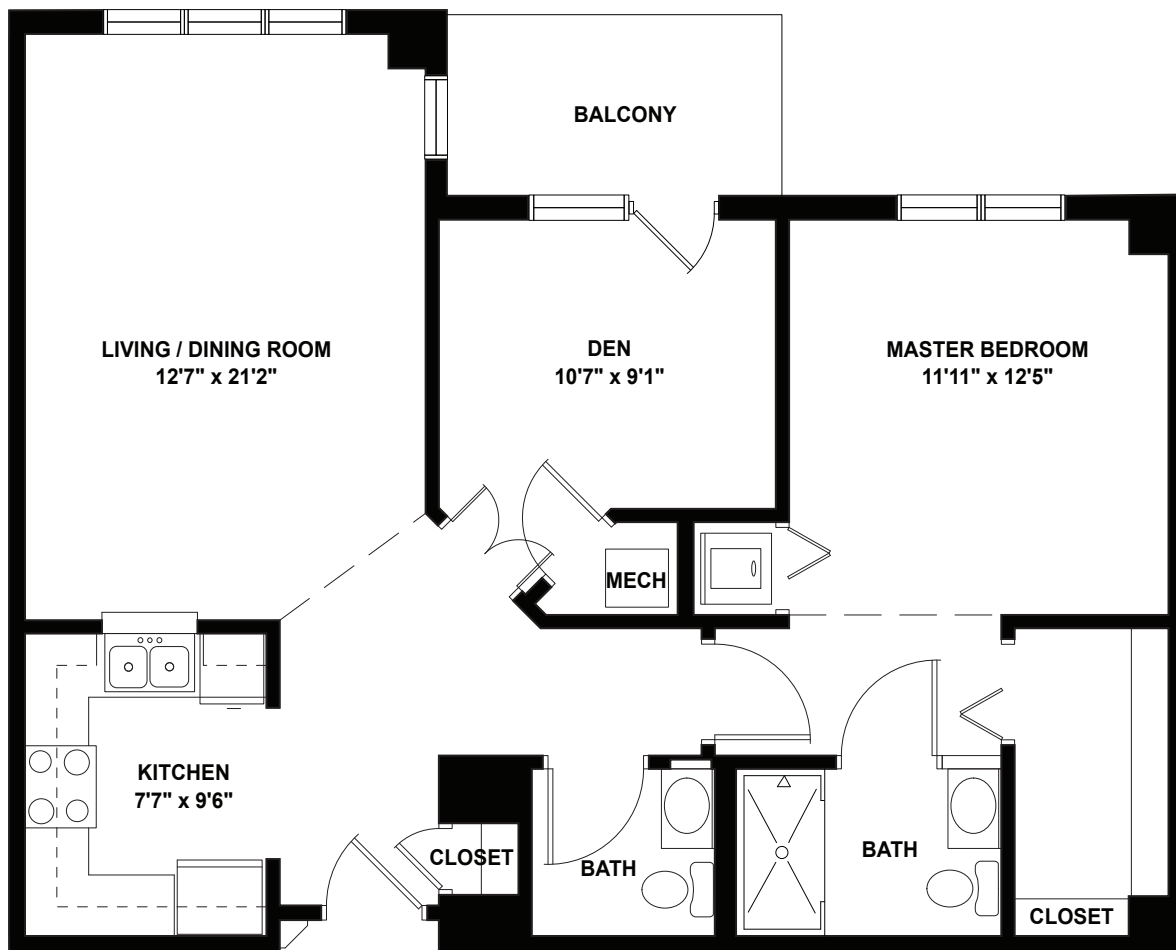


CONTACT US! Call **(336) 714-2157** or visit **salemtowne.org**

DRISCOLL BUILDING APARTMENTS

Sherwood - **936 sq. ft.**

1 Bedroom / 1.5 Baths / Den



CONTACT US! Call (336) 714-2157 or visit salemtowne.org